

Right Angle Sanders for use with Abrasive Discs

2" (50 mm)
0.4 H.P. - 0.7 H.P. (300 - 525 W)



280RAK/290RAK/330RAK/340RAK

Quick Order Number

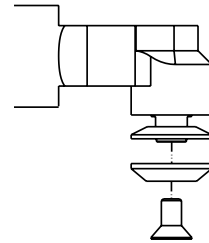
This chart has been provided as a means to quickly identify a particular tool. The ordering numbers listed represent the most common versions of our tools. If more specialized versions are required, please build your model number per the following model number flow chart.

Model Number	Spindle Thread	Rated Speed	Throttle Type	
			Standard Lever	Safety Lever
280RA	1/4-20 External	16000 RPM	280RA6	280RA6K
290RA		26000 RPM	290RA6	290RA6K
330RA		12000 RPM	330RA6	330RA6K
340RA		20000 RPM	340RA6	340RA6K

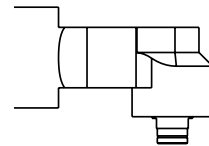
The tools listed in this chart will be provided with an aluminum housing. Steel housing material is available. See information below for the entire spectrum of options available.



Front view of
280RA/290RA/330RA/340RA
Series Tools

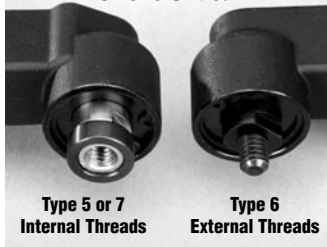


Internal Thread Output w/Flanges to
Mount 1/4" ID Surface Conditioning Discs



Internal Thread Output w/o Flanges to
Mount Cartridge Rolls

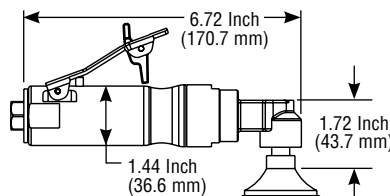
Very Small RA Head for
Applications where
Size is Critical



Type 5 or 7
Internal Threads

Type 6
External Threads

280RAK/290RAK/330RAK/340RAK



280RA/290RA - 0.4 H.P. (300 W)
330RA/340RA - 0.7 H.P. (525 W)



	Aluminum	Steel
280RA - 1.3 Lbs. (0.6 Kg)	1.8 Lbs. (0.8 Kg)	
290RA - 1.3 Lbs. (0.6 Kg)	1.8 Lbs. (0.8 Kg)	
330RA - 1.4 Lbs. (0.6 Kg)	2.0 Lbs. (0.9 Kg)	
340RA - 1.4 Lbs. (0.6 Kg)	2.0 Lbs. (0.9 Kg)	



280RA/290RA - 18 cfm (8.5 L/s) Max.
330RA/340RA - 25 cfm (11.8 L/s) Max.

Example Model Number: **330RA 6 K S ; 12000**

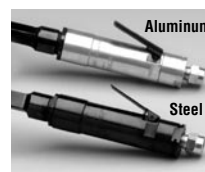
The blue highlighted entries are shown in the Quick Reference Box above.				
Model Number	Spindle Options	Lever Style	Case Material	Operating Speed
280RA	5 - 1/4-28 Internal 6 - 1/4-20 External 7 - 1/2-28 Internal	Please choose one of the following options: No Designation - Standard Lever K - Safety Lever	Please choose one of the following options: No Designation - Aluminum Case S - Steel Case	16000 - 16000 R.P.M.
290RA				26000 - 26000 R.P.M.
330RA				12000 - 12000 R.P.M.
340RA				20000 - 20000 R.P.M.

Geared Tool



Safety
Lever

Regular
Lever



Aluminum

Steel

WARNING: Follow all recommendations from component and abrasive manufacturers for speeds and proper usage.

Right Angle Sanders for use with Abrasive Discs

2" (50 mm)
0.4 H.P. - 1.2 H.P. (300 - 900 W)



Air Inlet Size:

270RA/320RA: 1/4" NPT

420RA: 3/8" NPT

Hose Size Recommendations:

270RA/320RA: 3/8" (10mm)

420RA: 1/2" (13mm)

Extra Charge Accessories

- Safety Lever

Standard Equipment

- Tool with Wrench • Operating Instructions and Service Manual

Special Features

- Small Right Angle Head for Limited Space Sanding

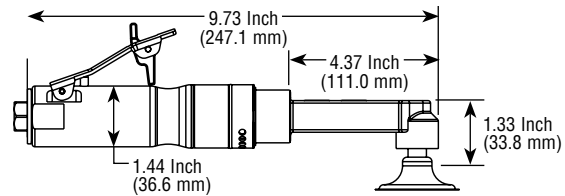
Quick Order Number

This chart has been provided as a means to quickly identify a particular tool. The ordering numbers listed represent the most common versions of our tools. If more specialized versions are required, please build your model number per the following model number flow chart.

Model Number	Spindle Thread	Rated Speed	Throttle Type	
			Standard Lever	Safety Lever
270RA	1/4-20 External	26000 RPM	270RA6	270RA6K
320RA		20000 RPM	320RA6	320RA6K
420RA		13000 RPM	420RA6	420RA6K

The tools listed in this chart will be provided with an aluminum housing. Steel housing material is available. See information below for the entire spectrum of options available.

270RAK/320RAK



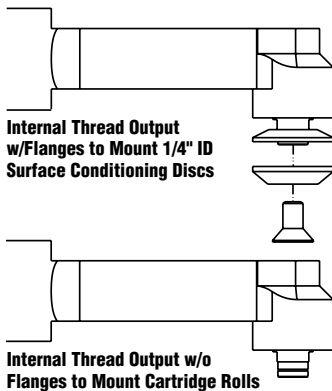
270RA - 0.4 H.P. (300 W)
320RA - 0.7 H.P. (525 W)



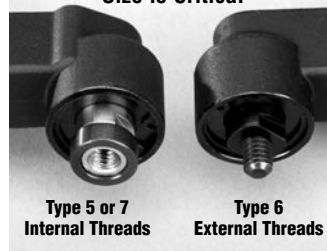
Aluminum Steel
270RA - 2.0 Lbs. (0.9 Kg) 2.5 Lbs. (1.1 Kg)
320RA - 2.1 Lbs. (1.0 Kg) 2.6 Lbs. (1.2 Kg)



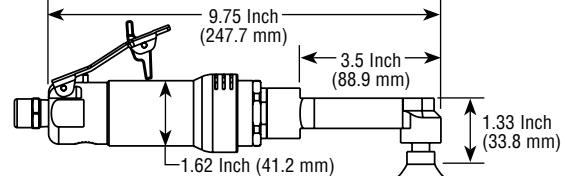
270RA - 18 cfm (8.5 L/s) Max
320RA - 25 cfm (11.8 L/s) Max



Very Small RA Head for Applications where Size is Critical



420RAK*



*Rear exhaust adds 0.82 Inch (20.8 mm) to overall length.



1.2 H.P. (900 W)



2.7 Lb. Aluminum
3.2 Lb. Steel



35 cfm (16.5 L/s) Max

Example Model Number: **320RA 6 K S R ; 20000**

Model Number	Spindle Options	Lever Style	Case Material	Exhaust Direction	Operating Speed
270RA	5 - 1/4-28 Internal	Please choose one of the following options: No Designation - Standard Lever K - Safety Lever	Please choose one of the following options: No Designation - Aluminum Case S - Steel Case	Please choose one of the following options: No Designation - Side Exhaust R - Rear Exhaust	26000 - 26000 R.P.M.
320RA	6 - 1/4-20 External				20000 - 20000 R.P.M.
420RA	7 - 1/2-28 Internal				13000 - 13000 R.P.M.

Geared Tool



WARNING: Follow all recommendations from component and abrasive manufacturers for speeds and proper usage.

Right Angle Sanders for use with Abrasive Discs

1" (25 mm) - 2" (50 mm)
0.4 H.P. - 1.2 H.P. (300 - 900 W)



Air Inlet Size:

2601RA/3101RA: 1/4" NPT

4101RA: 3/8" NPT

Hose Size Recommendations:

2601/3101RA: 3/8" (10mm)

4101RA: 1/2" (13mm)

Extra Charge Accessories

- Safety Lever

Standard Equipment

- Tool with Wrench • Operating Instructions and Service Manual

Special Features

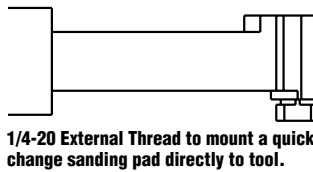
- Small Right Angle Head for Limited Space Sanding
- Extended Neck for Better Reach

Quick Order Number

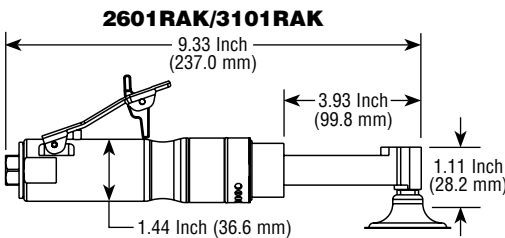
This chart has been provided as a means to quickly identify a particular tool. The ordering numbers listed represent the most common versions of our tools. If more specialized versions are required, please build your model number per the following model number flow chart.

Model Number	Spindle Thread	Rated Speed	Throttle Type	
			Standard Lever	Safety Lever
2601RA	1/4-20 External	30000 RPM	2601RA6	2601RA6K
3101RA		23000 RPM	3101RA6	3101RA6K
4101RA		15000 RPM	4101RA6	4101RA6K

The tools listed in this chart will be provided with an aluminum housing. Steel housing material is available. See information below for the entire spectrum of options available.



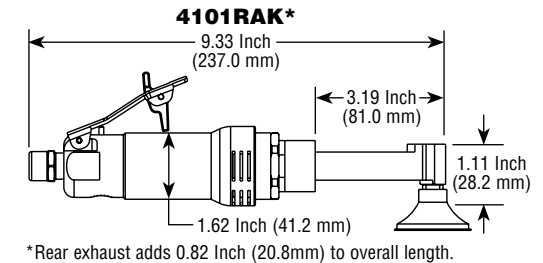
Very Small RA Head for Applications where Size is Critical



2601RA - 0.4 H.P. (300 W)
3101RA - 0.7 H.P. (525 W)

Aluminum Steel
2601RA - 1.8 Lbs. (0.8 Kg) 2.3 Lbs. (1.0 Kg)
3101RA - 1.9 Lbs. (0.9 Kg) 2.4 Lbs. (1.1 Kg)

2601RA - 18 cfm (8.5 L/s) Max.
3101RA - 25 cfm (11.8 L/s) Max.



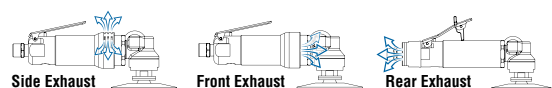
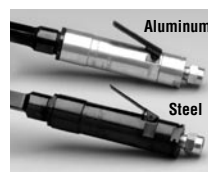
*Rear exhaust adds 0.82 Inch (20.8mm) to overall length.

1.2 H.P. (900 W) 2.3 Lb. (1.3 Kg) Aluminum 35 cfm (16.5 L/s) Max.
2.8 Lb. (1.6 Kg) Steel

Example Model Number: **4101RA 6 K S R ; 15000**

Model Number	Spindle Options	Lever Style	Case Material	Exhaust Direction	Operating Speed/Sanding Pad Size
2601RA	5 - 1/4-28 Internal	Please choose one of the following options: No Designation - Standard Lever K - Safety Lever	Please choose one of the following options: No Designation - Aluminum Case S - Steel Case	Please choose one of the following options: No Designation - Side Exhaust R - Rear Exhaust	30000 - 30000 R.P.M.
3101RA	6 - 1/4-20 External				23000 - 23000 R.P.M.
4101RA	7 - 1/2-28 Internal				15000 - 15000 R.P.M.

Geared Tool



WARNING: Follow all recommendations from component and abrasive manufacturers for speeds and proper usage.