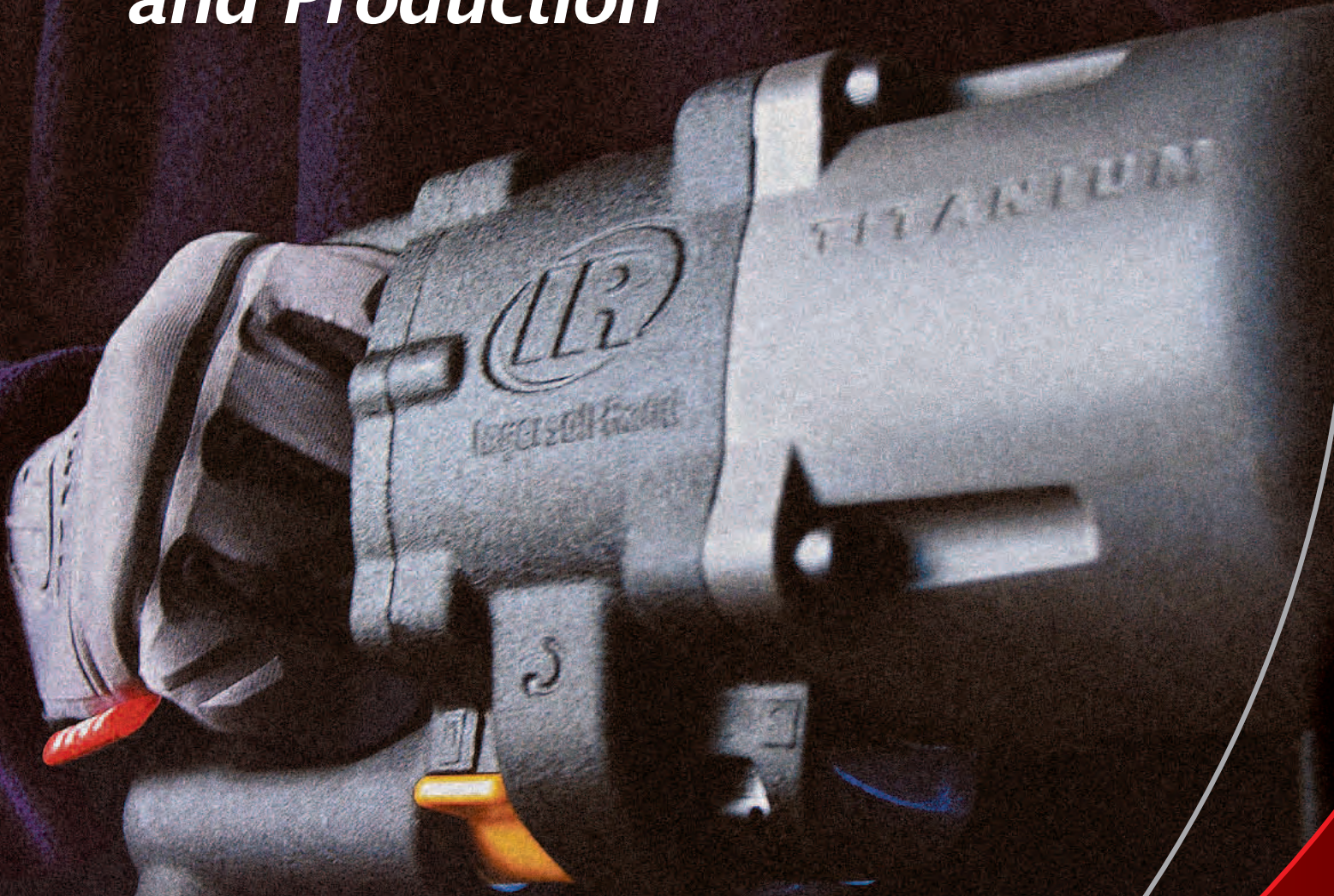




Industrial Maintenance and Production



100

Best Sellers
for Maintenance
& Industrial Supply

**Ingersoll Rand
is a leading
innovation
and solutions
provider for
the major global
markets of Security
& Safety, Climate
Control and
Industrial Solutions.**



The company's diverse product portfolio encompasses such leading industrial and commercial brands as **Schlage** locks and security solutions; **Thermo King** transport temperature control equipment; **Husmann** commercial and retail refrigeration equipment; **Club Car** golf cars and utility vehicles; **PowerWorks** microturbines; and **Ingersoll Rand** industrial and construction equipment.

In addition, Ingersoll Rand offers products and services under many more premium brands for customers in industrial and commercial markets.

Climate Control Technologies

Equipment and services to manage a controlled temperature environment for food and other perishables



Security Technologies

Products and services to enhance security and safety for residential, commercial and institutional buildings



Industrial Technologies

Products to enhance industrial efficiency and engineered systems



100 Best Sellers for Maintenance & Industrial Supply

Contents



Ingersoll Rand Tool Rating System



*Intensive industrial
production*



*Industrial
production*



*Industrial
maintenance*



*Professional
maintenance*



*Non professional grade
products (not available)*

Air Tools and Accessories



Impacttools™Pages 4-10
ScrewdriversPage 11
Ratchet Wrenches.....Pages 12-13



DrillsPages 14-15



GrindersPages 16-18
SandersPages 19-20



SawsPage 21



HammersPage 22
ScalersPage 23



Special
Body Shop Tools & Riveters, Pumps,
Motors, Manual HoistsPages 24-26



Airline AccessoriesPages 27-28

Electric Tools and Accessories



IQV Cordless Tools:
(Impact Wrenches, Ratchet
Wrenches, Drills).....Pages 29-31

Other Information



Tool Accessories.....Pages 32-33



Accessories Table ⁽¹⁾Pages 34-35
Contact Information.....Page 36

(1) To help in your choice, an accessories table is presented on pages 34 and 35.



3/8" Drive Air Impacttools™



**Ingersoll Rand
is the Inventor
of the Air
Impactool™**

3/8" Impact Wrenches @ 90 psi – 6.2 bar

Model	Std. bolt capacity	Socket retainer	Working torque (Nm)	Max. torque (Nm)	Net weight (kg)	Overall length (mm)	Air inlet (in)	Min. hose size (mm)
2902P1-EU	M8	Pin	27 - 163	190	1.30	140	1/4	8
2115QTi	M12	Ring	34 - 312	339 (1)	1.10	142	1/4	10
211-EU	M12	Ring	27 - 204	245	1.10	168	1/4	10
212-EU	M12	Ring	27 - 204	245	1.30	152	1/4	10

(1) Max. torque in REVERSE MODE 380 Nm.

2902P1-EU ★★★★★



- Assembly and light maintenance.
- Jumbo hammer mechanism.
- Power regulator varies power by job.
- Pressure feed impact lubrication extends life.



2115QTi ★★★★★



- Mechanics and maintenance.
- Titanium technology; strong, durable and lightweight.
- Lightest most powerful impact wrench on the market: 380 Nm in reverse mode.
- Only 142 mm long ideal for confined spaces.
- Optional protective tool boot, part no. 2115-P32



211-EU ★★★



- Sump removal, exhaust and transmission work.
- Jumbo hammer mechanism.
- Pressure-feed lubrication extends life.
- Power regulator.
- Optional protective tool boot, part no. 211-P32



212-EU ★★★



- Same as the 211-EU in pistol grip version.
- Optional protective tool boot, part no. 202-P32



Ingersoll Rand Impact Wrench Hammer Mechanisms



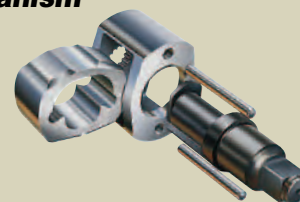
TwinHammer™ Mechanism

- Delivers more power per pound, and is less sensitive to air pressure fluctuations than any other design.
- Smooth, balanced blow.
- High power-to-weight ratio.
- Suitable for hard or soft-draw applications.



Jumbo Hammer Mechanism

- Similar in concept to the TwinHammer mechanism, but employing a single hammer.
- Simplified design.
- Reversible hammers.



2906P1-EU ★★★★★



- Production assembly and maintenance.
- Twin hammer mechanism.
- Built in power regulator.
- Pressure feed impact lubrication extends life.



2135QPTi ★★★★★



- Titanium technology; strong, durable and lightweight.
- 1356 Nm of breakaway torque and weighs just 1.8 Kg.
- Fast removal of seriously corroded bolts.
- Quiet technology : reflective method of noise reduction.
- Socket pin retainer.
- Composite housing.
- Optional protective tool boot, part no. 2135-P32



2135QTi ★★★★★



- Same tool as above with socket ring retainer.
- Available with 50 mm extended anvil: model no. **2135QTi-2**.
- Optional protective tool boot, part no. 2135-P32



2135SK ★★★★★



- 1/2" impact wrench kit, contains 2135QTi 1/2" square drive impact wrench with 10 sockets (10, 11, 12, 13, 14, 17, 19, 21, 22 and 24 mm).
- Durable carrying case.



2125QTi ★★★★★



- Mini impact wrench for maintenance and repair.
- Titanium technology; strong, durable and lightweight.
- Lightest most powerful 1/2" TwinHammer impact wrench : 380 Nm in reverse mode.
- Composite housing.
- Only 142 mm long for comfortable use in confined spaces.
- Optional protective tool boot, part no. 2115-P32



1/2" Drive Air Impacttools™



**Ingersoll Rand
also provides ATEX
certified Tools**

See ATEX Impact Wrenches page 10.



Optional Protective Tool Boots

Keep your Ingersoll-Rand air Impact wrench free from external damage with protective boots in vinyl material.

1/2" Impact Wrenches @ 90 psi – 6.2 bar

Model	Std. bolt capacity	Socket retainer	Working torque (Nm)	Max. torque (Nm)	Net weight (kg)	Overall length (mm)	Air inlet (in)	Min. hose size (mm)
2906P1-EU	M14	Pin	54 - 475	678	2.70	142	1/4	10
2135QPTi	M16	Pin	68 - 814	848 (1)	1.80	186	1/4	10
2135QTi	M16	Ring	68 - 814	848 (1)	1.80	186	1/4	10
2135QTi-2	M16	Ring	68 - 814	848 (1)	2.00	237	1/4	10
2125QTi	M12	Ring	34 - 312	339 (2)	1.10	142	1/4	10

(1) Max. torque in REVERSE MODE 950 Nm — (2) Max. torque in REVERSE MODE 380 Nm.



1/2" Drive Air Impacttools™



**Lifetime warranty
on all Ingersoll Rand
sockets!**

See socket sets page 32.

1/2" Impact Wrenches @ 90 psi – 6.2 bar

Model	Std. bolt capacity	Socket retainer	Working torque (Nm)	Max. torque (Nm)	Net weight (kg)	Overall length (mm)	Air inlet (in)	Min. hose size (mm)
2130XP	M16	Ring	68 - 600	814	1.90	184	1/4	10
231GXP	M14	Ring	34 - 475	678	2.60	185	1/4	10

2130XP ★★★★★



- Composite housing.
- TwinHammer impact mechanism.
- Multiposition power management.
- Ergonomic textured handle for improved grip control.
- Optional protective tool boot, part no. 2130-P32



2130XP-K ★★★★★



- Contains 2130XP 1/2" impact wrench with 10 impact sockets (10, 11, 12, 13, 14, 17, 19, 21, 22 and 24 mm).



231GXP ★★★★★



- Repair and maintenance with rubber grip handle.
- Pressure-feed lubrication system extends life.
- Reverse biased for increased performance.
- Optional protective tool boot, part no. 231-P32



231GXP-K ★★★★★



- Contains 231GXP 1/2" impact wrench with 10 impact sockets (10, 11, 12, 13, 14, 17, 19, 21, 22 and 24 mm).



Ingersoll Rand Cordless Tools

Ingersoll Rand also provides Cordless Industrial Tools.

- Impact Wrenches from 54 to 488 Nm max. torque.
- Ratchet Wrenches from 34 to 94 Nm max. torque.
- 13 mm Drills / Drivers from 62 to 73 Nm stall torque.

See descriptions pages 29 to 31.



2925P1Ti ★★★★★



- For production and heavy maintenance.
- The most powerful 3/4" impact wrench : 1970 Nm maximum torque !
- Titanium technology; strong, durable and lightweight.
- TwinHammer impact mechanism.
- Corrode "X" internal features resist corrosion.



2141P ★★★★★



- Composite Impact Wrench for industrial maintenance.
- Very high power to weight ratio.
- Built in power regulator.
- One hand operation forward / reverse.
- Bronzed plate for durability.
- Optional protective tool boot, part no. 2141-P32



2161XP ★★★★★



- For production and maintenance.
- Six vane high-output air motor.
- TwinHammer impact mechanism.
- Three position power regulator.
- Also available with 150 mm extended anvil, model **2161XP-6**.



261-EU ★★★



- Repair and maintenance.
- Jumbo hammer impact mechanism.
- Pressure feed lubrication system and power regulator system.
- Available with 150 mm anvil, model no. **261-6-EU**.
- Optional protective tool boot, part no. 261-P32



258 ★★

- Adjustable power.
- 360° swivel inlet eliminates twisted hoses.
- Silenced, in-handle exhaust.



3/4" Drive Air Impacttools™



The benefits of the Ingersoll Rand TwinHammer™ Mechanism



- Contains only 4 working parts. Longer life and reduced maintenance.
- Delivers an instantaneous, balanced blow.
- Gives more power and less vibration to the operator.

3/4" Impact Wrenches @ 90 psi – 6.2 bar

Model	Std. bolt capacity	Socket retainer	Working torque (Nm)	Max. torque (Nm)	Net weight (kg)	Overall length (mm)	Air inlet (in)	Min. hose size (mm)
2925P1Ti	M30	Hole	476 - 1496	1970	5.40	225	1/2	13
2141P	M27	Hole	270 - 1220	1400 (1)	3.20	208	3/8	13
2161XP	M27	Ring	410 - 1380	1700	5.30	216	3/8	13
2161XP-6	M27	Ring	410 - 1380	1700	5.90	368	3/8	13
261-EU	M27	Ring	270 - 1220	1495	5.60	224	3/8	13
261-6-EU	M27	Ring	270 - 1220	1495	6.20	376	3/8	13
258	M27	Ring	270 - 1088	1360	4.90	249	3/8	13

(1) Max. torque in REVERSE MODE 1600 Nm.



1" & 1 1/2" Drive Air Impacttools™



**High power
& low weight
with the TITANIUM
Series Team !**



**Ingersoll Rand
also provides ATEX
certified Tools**

See ATEX Impact Wrenches page 10.



**Lifetime warranty
on all Ingersoll Rand
sockets !**

See socket sets on page 32.

3955B2Ti ★★★★★



- 1 1/2" square drive model : the heaviest of maintenance and repair operations.
- Titanium technology; strong, durable and lightweight.
- Strongest most durable mechanism.
- 7 vane motor gives exceptional power.
- Reverse bias with bronze end plates for the ultimate in corrosion and wear resistance.



3942B2Ti ★★★★★



- 1" square drive model : the heaviest of maintenance and repair operations.
- Titanium technology.
- Strongest most durable mechanism.
- Exceptional power with 7 vane motor.
- Reverse bias with bronze end plates for the ultimate in corrosion and wear resistance.
- Delivers 4400 Nm maximum torque.



3940B2Ti ★★★★★



- Same tool as above with a shorter motor and lighter body (9.6 kg and 3730 Nm max. torque).



2925B2Ti ★★★★★



- 1" model for heavy maintenance and repair.
- Titanium technology; strong, durable and lightweight.
- Corrode "X" internal features resist corrosion.
- Most powerful version of 2925 series.



2925P3Ti ★★★★★



- Heavy maintenance and repair.
- 1" version of 2925P1Ti.
- Titanium technology; strong, durable and lightweight.
- Corrode "X" internal features resist corrosion.



2171XP ★★★★★



- Compact tool - only 216 mm long.
- TwinHammer impact mechanism.
- Six vane high-output air motor.
- Three position power regulator.



271-EU ★★ ★



- General industrial maintenance.
- Jumbo hammer impact mechanism.
- Pressure feed lubrication system.
- Supplied with dead handle.



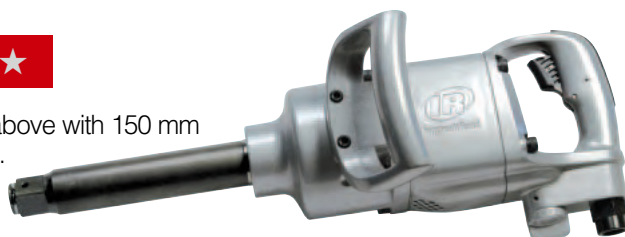
285B ★★

- Industrial maintenance of trucks.
- Three position power regulator.
- "Angled-down" exhaust.
- Adjustable side handle.



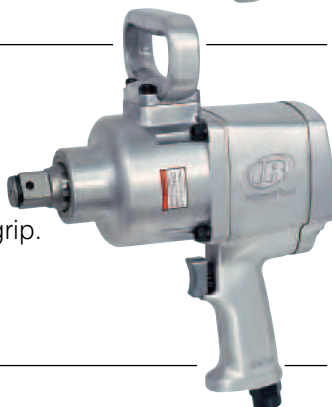
285B-6 ★★

- Same tool as above with 150 mm extended anvil.

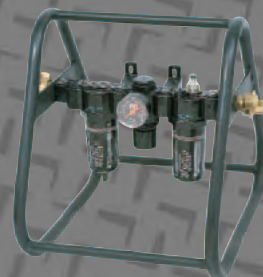


295-A ★★

- Industrial maintenance, plant applications and bus/truck chassis work.
- Top-mounted dead handle for a good grip.
- Three position power regulator.
- Available with 150 mm extended anvil: model number **295A-6**.



1" & 1 1/2" Drive Air Impacttools™



See our Portable Heavy Duty FRL-Combi page 27



Spring Balancers

Range of spring balancers with load capacities from 0.4 to 18 kg presented on page 34.

1" & 1 1/2" Impact Wrenches @ 90 psi – 6.2 bar

Model	Std. bolt capacity	Socket retainer	Working torque (Nm)	Max. torque (Nm)	Net weight (kg)	Overall length (mm)	Air inlet (in)	Min. hose size (mm)
1 1/2" impact wrench								
3955B2Ti	M42	Hole	2169 - 5559	6644	15.7	419	1/2	13
1" Impact Wrenches								
3942B2Ti	M39	Hole	1355 - 2850	4406	10.5	362	1/2	13
3940B2Ti	M36	Hole	680 - 2440	3730	9.6	343	1/2	13
2925B2Ti	M33	Hole	475 - 1900	2170	6.5	314	1/2	13
2925P3Ti	M33	Hole	475 - 1495	1970	5.4	225	1/2	13
2171XP	M30	Ring	410 - 1380	1700	5.9	216	3/8	13
271-EU	M30	Ring	135 - 1020	1630	5.7	226	3/8	13
285B	M33	Ring + hole	135 - 1550	1970	10.9	335	1/2	13
285B-6	M33	Ring + hole	135 - 1550	1970	12.4	511	1/2	13
295A	M33	Ring + hole	135 - 1550	1970	10.0	267	1/2	13
295A-6	M33	Ring + hole	135 - 1550	1970	11.5	440	1/2	13



**ATEX Certified
Impacttools™**



New

Ingersoll Rand has always offered product to be used in hazardous atmospheres. Investment in low static spark composite technology has made possible a new range of lightweight Impact Wrenches which are fully certified to classifications EX I M2 c IIB 95°C X and EX II 2 GD c IIB 95°C X under the new European Directives 94/9/EC and 1999/92/EC – commonly known as the ATEX Directives.

These are the tool of choice for specialised applications within the petrochem and mining industries, and in any production or processing areas where hazardous atmospheres can occur.

ATEX Impact Wrenches @ 90 psi – 6.2 bar

Model	Std. bolt capacity	Socket retainer	Working torque (Nm)	Max. torque (Nm)	Net weight (kg)	Overall length (mm)	Air inlet (in)	Min. hose size (mm)
2131PSP	M16	Hole	60 - 540	612 (1)	2.00	180	1/4	10
2141PSP	M27	Hole	270 - 1220	1400 (2)	3.20	208	3/8	13
2151P1SP	M27	Hole	270 - 1220	1400 (2)	3.30	212	3/8	13



21 Series

2131PSP ★★★★★



- 1/2" Square drive Impact wrench.
- Certified to ATEX EXII 2 GD c IIB 95°C X and EXI M2 c IIB 95°C X.
- High output TwinHammer.
- Pressure-feed lubrication system.
- Reverse biased motor cylinder for increased performance - Delivers 816 Nm maximum torque.
- One hand operation forward / reverse.



2141PSP ★★★★★



- 3/4" Square drive Impact wrench.
- Certified to ATEX EXII 2 GD c IIB 95°C X and EXI M2 c IIB 95°C X.
- High output TwinHammer.
- Pressure-feed lubrication system.
- Six vane high output air motor.
- One hand operation forward / reverse.



2151P1SP ★★★★★



- Same features as the 2141PSP model with 1" square drive anvil.



(1) Max. torque in REVERSE MODE 816 Nm — (2) Max. torque in REVERSE MODE 1600 Nm.